

Beverly Taylor Sorensen Arts Learning Program (BTS Arts)

- Implemented in Utah elementary schools starting in 2008; funded by Legislature
- The reason why elementary teachers have one of their 45 minute planning periods in Granite
- Specialists in Visual Art, Music, Dance, and Drama
- Arts Skills + Math/Science/ELA/Social Studies Skills= Arts Integrated Instruction
- While we have our own AR positions for BTS (like our colleagues in PE), the BTS teachers at your schools are represented by you!

Where
discovery
happens.



BTS
ARTS

BEVERLY
TAYLOR
SORENSEN
ARTS LEARNING
PROGRAM



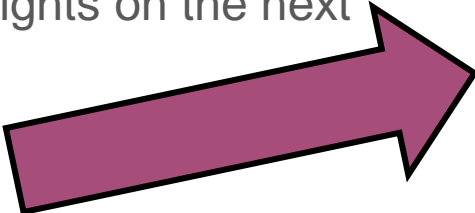
Where
ideas have
power.

Granite School District BTS Protocols

- An addendum to the Professional Agreement
- It's our job as ARs and represented employees to make sure they're being upheld
- We are the only district in our UniServ region with a BTS-specific set of protocols



P.S. This is page 1 of a 5-page document, so we'll look at some highlights on the next slide



GSD Beverley Taylor Sorenson Arts Learning Program
2500 South State Street
Salt Lake City, UT 84115
385-646-4638



385-646-5000
Fax: 385-646-4128
www.graniteschools.org

Granite School District
Beverley Taylor Sorenson Arts Learning Program
2024-2025 Protocol for Implementation

Mission Statement-
Provide every elementary student in Granite School District with the opportunity to experience, and express themselves through, the fine arts core curriculum with the support of licensed Art educators.

Goals & Objectives-
To expand the quantity and quality of art instruction provided in our elementary schools. Students will develop the skills and understanding articulated in the State Fine Arts Core Curriculum and in the content objectives of the GSD Elementary Arts curriculum maps. BTSALP Arts Integration consists of K-6 students engaging in the creative process, connecting an art form to another subject area, and deepening the understanding of core subjects.

2024-2025 Protocol-
To assure the program will function consistently and effectively in a safe, clean, enriching arts education environment.

- 1) Teacher Supervision
- BTSALP Teachers will be supervised as a member of the faculty by their two school principals directly (time, attendance). PG&E will be assigned to one of the two principals each year. The Curriculum & Instruction director will support all school-level administrative needs and concerns.
 - BTS Teachers are certified full-time teachers and need to receive all information sent to faculty members at each one of their assigned schools to ensure smooth implementation of the program.
 - BTS Teachers will be supported by the (1) District Arts Instructional Coach(s) (Academic Support, Art Teacher needs, budgets and professional learning), (2) the U

Granite School District BTS Protocols

Highlights include:

- BTS teachers should have a classroom
- Students should not be pulled from arts instruction for intervention/remediation
- BTS teachers should NOT be teaching more than one homeroom at a time
- Participation grades (Y/N) are given each quarter on Elementary Report Cards
- BTS teachers need to be in the know about accommodations for ALL students
 - Such as: IEP, health plan, 504, PBIS behavior contract, SST status, etc.
- We have our own district-level PLC, so you may not see us at building PLC gatherings

BTS/PE Master Scheduling / Problem Solving Collaboration

Step 1 SPRING

Principal meets with BTS/PE teachers to collaborate on a master schedule that adheres to the protocols and works best for all. Principal shares the proposed schedule with all teachers for feedback.

Step 2 OPENING STAFF

Principal, BTS/PE teachers and classroom teachers discuss the BTS/PE protocols and expectations for adhering to the guidance at opening faculty meeting.

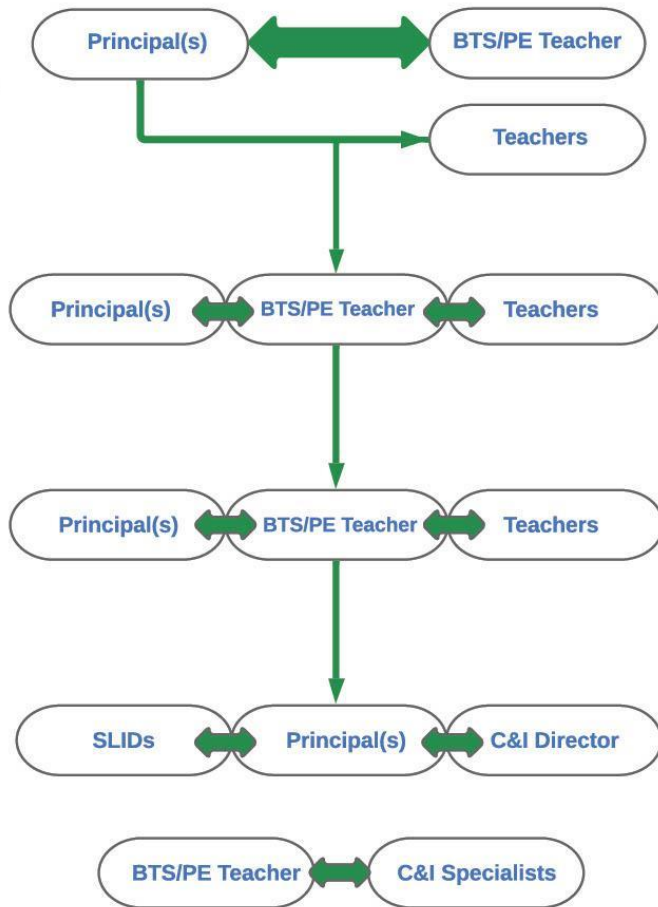
Step 3 ONGOING

Principal, BTS/PE teachers and classroom teachers collaborate to resolve any unforeseen concerns, obstacles, or confusion about implementation of the protocols.

Step 4 ONGOING

Principals seek clarification and guidance from SLIDs/C&I director on issues that remain unresolved after ongoing collaboration and problem-solving from Step 3

BTS/PE teachers seek clarification on questions/concerns from the Curriculum and Instruction specialists on BTS/PE protocols and program concerns.



BTS/PE Master Schedule Flow Chart

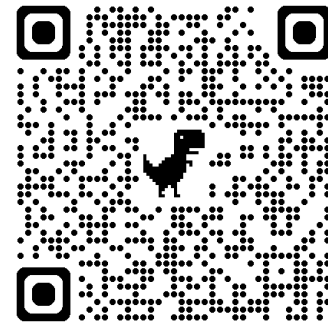
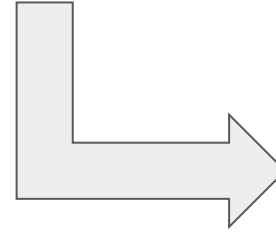
Highlights Include:

- BTS and PE teachers should be part of the schedule creation process
- Principals *should* cover the BTS and PE protocols at the opening faculty meeting
 - Show of hands...who did this at your building this year?
- If conflicts arise, let your admin and BTS/PE colleagues know right away!

For more information...

About BTS Arts: <https://btsarts.org/>

Link to this whole
presentation



Fine Arts Education in Utah: <https://schools.utah.gov/curr/finearts?mid=4609&tid=6>

The BTS Protocols in Granite: (GSD Link- open using your district account)

https://drive.google.com/file/d/1R563hAvnEI5U3_XAsIF_2v6olzNrknUh/view?usp=drive_link

Master Schedule Flow Chart: (GSD Link- open using your district account):

https://drive.google.com/file/d/1IPP7jyEmagtkOdGWTToyJI6PhKrRfgVG0/view?usp=drive_link

What our section of GEA is up to: <https://sites.google.com/view/granite-bts-teachers>

Or come talk to Nathaniel and Caitlyn at an AR meeting or at school!